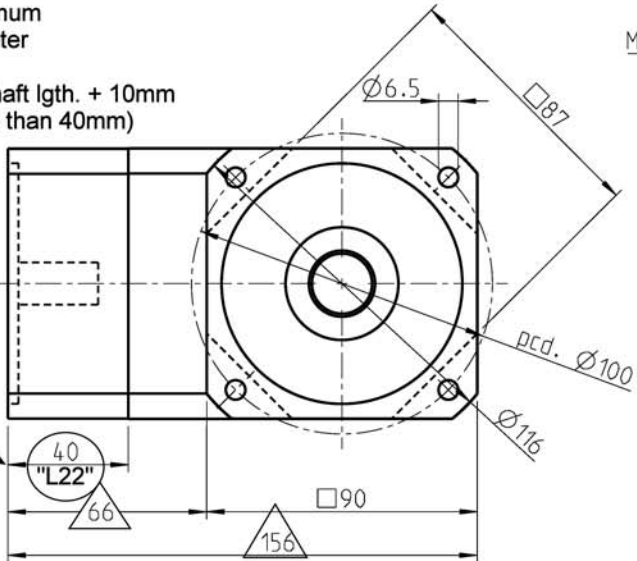


19mm maximum input diameter

"L22" = motor shaft lgth. + 10mm (But not less than 40mm)

"L22" depends on motor shaft lgth.

As "L22" increases, so do dimensions in triangles



|    | 1.stage |    | 2.stage |     |
|----|---------|----|---------|-----|
| L1 | 200.5   |    | 229     |     |
| L2 | 69      |    | 97.5    |     |
|    | i       | Mn | i       | Mn  |
|    | 4       | 64 | 16      | 120 |
|    | 5       | 80 | 20      | 110 |
|    | 8       | 62 | 25      | 110 |
|    | 10      | 45 | 32      | 120 |
|    |         |    | 40      | 110 |
|    |         |    | 64      | 62  |
|    |         |    | 100     | 45  |

Mn = nominal output torque at output shaft [Nm]  
 Ⓞ emergency stop torque: 2 times

**Technical Specifications:**

planetary gear: straight-toothed/angle gearbox: arc-toothed  
 lifetime: 20.000h  
 output shaft bearing: taper roller bearing  
 - max. axial load: 6400N by n2=100 1/min /Fr=0 /Lh=20.000h<sup>(f)</sup>  
 - max. radial load: 4300N by n2=100 1/min /Fa=0 /Lh=20.000h<sup>(d)</sup>  
 - max. axial load: 5700N by n2=100 1/min /Fr=0 /Lh=30.000h<sup>(f)</sup>  
 - max. radial load: 3900N by n2=100 1/min /Fa=0 /Lh=30.000h<sup>(d)</sup>  
 - ref. on shaft center /T=30°C  
 backlash: 1.stage<=5 arcmin / 2.stage<=7 arcmin  
 - ref. on output shaft  
 max. input speed: n1=7000 1/min<sup>(b)</sup>  
 recommended input speed: n1<=2500 1/min<sup>(1)</sup>  
 lubrication: Life Lubrication  
 operating temperature: -25°C...+100°C

efficiency: by rated load (ratio dependently)  
 - ca. 97% 1.stage, ca. 94% 2.stage  
 nominal output torque: by n2=100 1/min  
 sealing:  
 - input: radial shaft seal ring  
 - output: radial shaft seal ring  
 motor mounting: M2 (stocked driving pinion)  
 - torque of clamping screw: 9.5Nm  
 method of working: S1  
 operation ratio: cB=1  
 protective system: IP 65  
 max. motor weight static: 15kg  
 Ⓞ Operating temperature may not be exceeded!

**Material:**

output shaft: GGG 60  
 housing: steel - black  
 input flange: Aluminium

Modification reserve!  
 Consider motor fitting constructions!



| h | date     | name  |
|---|----------|-------|
| g | 19.09.05 | Si/Ci |
| f | 19.09.05 | Si/Ci |
| e | 26.08.05 | IB/BB |
| d | 28.04.05 | SI/DH |
| c | 09.07.04 | Ci    |
| b | 22.01.04 | BB    |
| a | 19.05.03 | litte |

Neugart GmbH  
 Keltenstrasse 16  
 D - 77971 Kippenheim

|                                    |              |     |
|------------------------------------|--------------|-----|
| scale: 1:1.6                       | DIN A3       | ISO |
| data sheet WPLS 90 standard flange |              |     |
| Draw.-No.: MB - 913                | Blatt        |     |
| Part.-No.:                         | Bl.          |     |
| date: 03.03.99                     | name: Cihlar |     |