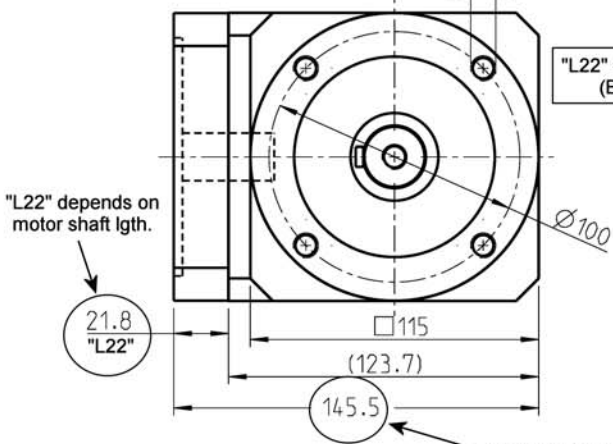


24mm maximum input diameter



"L22" = motor shaft lgth. (-) 18.2mm (But not less than 21.8mm)

"L22" depends on motor shaft lgth.

As "L22" increases, so does this dimension

	1.stage		2.stage		3.stage	
L1	249.5		276.5		304	
L2	74		101		128.5	
i=	Mn	i=	Mn	i=	Mn	
3	75	9 ⁽²⁾	210 ^(g)	60	260	
4	100	12 ⁽²⁾	260	80	260	
5	110	15	230	100	260	
8	120	16	260	120	230	
		20	260	160	260	
		25	230	200	230	
		32	260	256	260	
		40	230	320	230	
		64	120	512	120	

Technical Specification

planetary gear: straight-toothed
 lifetime: 20.000h (f)
 output shaft bearing: grooved ball bearing
 - max. axial load: 2800N by n2=100 1/min /Fr=0 /Lh=10.000h
 - max. radial load: 2000N by n2=100 1/min /Fa=0 /Lh=10.000h
 - max. axial load: 2100N by n2=100 1/min /Fr=0 /Lh=30.000h
 - max. radial load: 1500N by n2=100 1/min /Fa=0 /Lh=30.000h
 - ref. on shaft center/T=30°
 backlash: 1.stage<=12 arcmin, 2.stage<=16 arcmin (h)
 - 3.stage<=18 arcmin ref. on output shaft
 max. input speed: n1=6500 1/min^(t) (d)
 recommended input speed: n1<=3000 1/min^(t)
 lubrication: life grease lubrication
 operating temperature: -25°C ...+90°C
 efficiency: by rated load (ratio dependently)
 - ca. 94% 1.stage, ca. 92% 2.stage, (c)
 - ca. 88% 3.stage
 nominal output torque: by n2 = 100 1/min
 sealing: bearing 2RS
 motor mounting: M2 (stocked driving pinion)
 - torque of clamping screw: 16.5Nm
 method of working: S1
 operation ratio: cB=1
 protective system: IP 54 (a)
 max. motor weight static: 16kg

Mn = nominal output torque
 (c) at output shaft with
 tumscent load [Nm]
 (2) lifetime deviating
 10.000h at Mn

Material:

output flange: Aluminium - untreated
 input flange: Aluminium - untreated
 housing: Steel - black

(t) Operating temperature may not be exceeded!(d)

Modification reserve!
 Consider motor fitting instructions!

NEUGART				scale: 3:10	DIN A3	ISO
h	value adjustment	26.09.05	IB/BB	date	Name	
q	210 was 240	26.10.04	BB/ST	17.04.01	ille	
f	Lh was 10./20.000h	26.10.04	BB/ST	17.04.01	Böhler	
e	new dimensions	09.07.04	Fi	18.07.03	Cihlar	
d	text added	20.01.04	BB			
c	text added	18.07.03	ille			
b	dimension added	26.03.03	Bg			
a	was IP 43	12.12.01	ille			
stat	change	date	Nam. (Urspr.)	date: 01.02.01	name: Cihlar	

data sheet WPLE 120 standard flange

Draw - No.: MB - 939
 Part-No.:
 Blatt
 Bl.