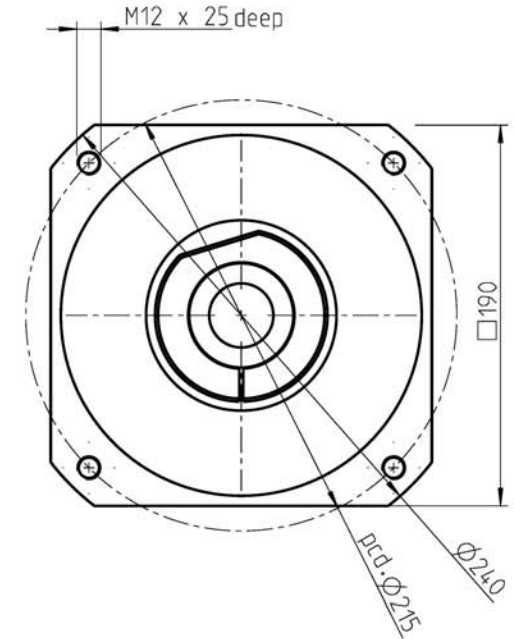
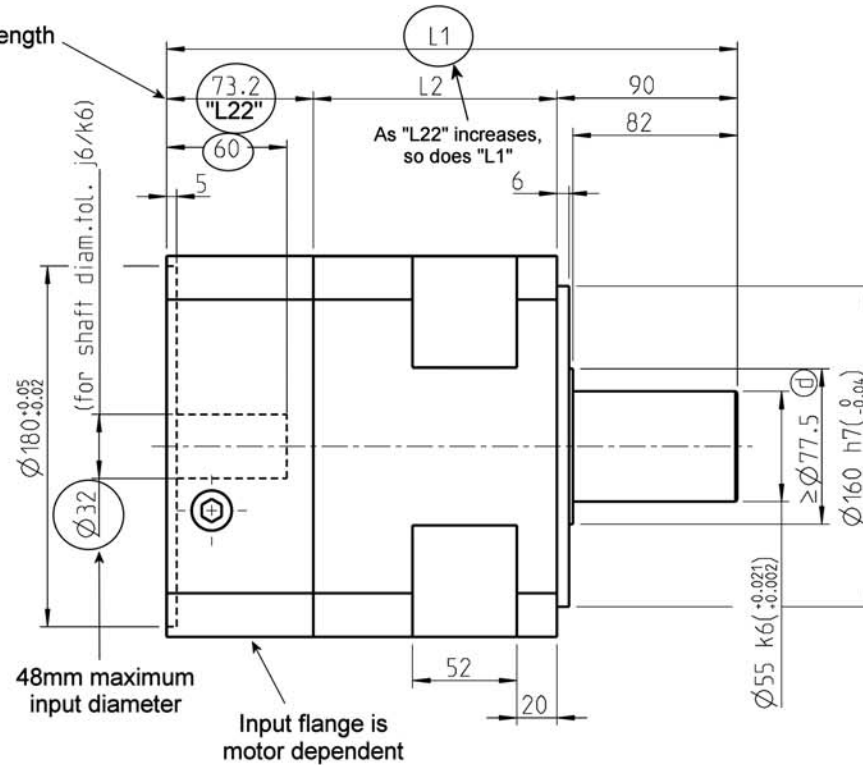
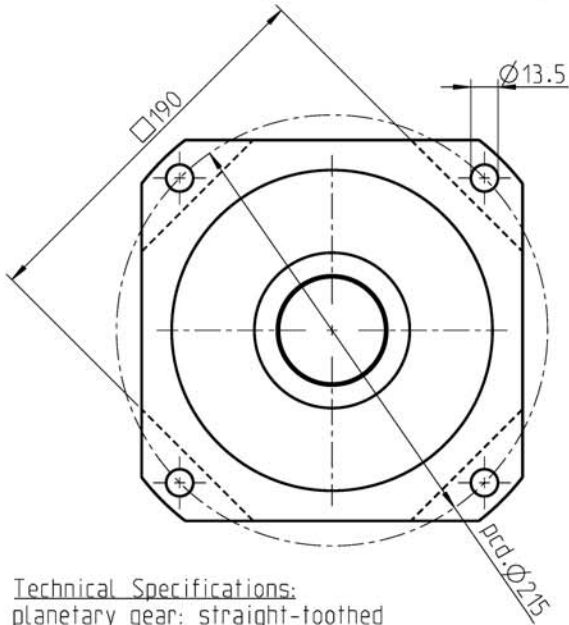


"L22" depends on motor shaft length
 "L22" = motor shaft lgth. + 13.2mm
 (But not less than 73.2mm)



Technical Specifications:

planetary gear: straight-toothed
 Lifetime: 20.000h

output shaft bearing: taper roller bearing

- max. axial load: 21000N by n2=100 1/min /Fr=0 /Lh=20.000h[Ⓐ]
- max. radial load: 13300N by n2=100 1/min /Fa=0 /Lh=20.000h[Ⓒ]
- max. axial load: 18500N by n2=100 1/min /Fr=0 /Lh=30.000h[Ⓐ]
- max. radial load: 12000N by n2=100 1/min /Fa=0 /Lh=30.000h[Ⓒ]
- ref. on shaft center / T=30°C

backlash: 1.stage<=3 arcmin / 2.stage<=5 arcmin
 - ref. on output shaft

max. input speed: n1=6000 1/min[Ⓐ]

recommended input speed: n1<=2500 1/min[Ⓐ]

lubrication: life lubrication

operating temperature: -25°C...+100°C

efficiency: by rated load (ratio dependently) [Ⓓ]

- ca. 98% 1.stage, ca.95% 2.stage

nominal output torque: by n2=100 1/min

sealing:

- input: radial shaft seal ring
- output: radial shaft seal ring
- motor mounting: M2 (stocked driving pinion)
- torque of clamping screw: 75Nm

method of working: S1

operation ratio: cB=1

protective system: IP 65

max.motor weight static: 75 kg

Material:

output shaft: GGG 60
 housing: GGG 60 - black
 input flange: Aluminium

	1.stage		2.stage	
L1	284.5		332	
L2	121.5		169	
	i	Mn	i	Mn
	3	1000	12	1800
	4	1200	15	1800
	5	1600	16	1800
	8	1000	20	1800
	10	630	25	1800
			32	1800
			40	1800
			64	1000
			100	630

Mn = nominal output torque
 at output shaft [Nm]

[Ⓕ] emergency stop torque: 2 times

[Ⓐ] Operating temperature may not be exceeded! [Ⓐ]

Modification reservel

Consider motor fitting instructions!

NEUGART				scale: 1:5		DIN A3		ISO	
h			date	name					
g			Auth.	03.08.01 ille					
f	text added	19.09.05	Si/Ci	Aud.		03.08.01		Cihlar	
e	value adjustment	19.09.05	Si/Ci	Rel.		03.08.01		Cihlar	
d	was Ø95	24.08.05	Si/BB						
c	text added	27.04.05	Si/DH	Neugart GmbH					
b	text added	09.07.04	Ci	Kettenstrasse 16					
a	text added	12.12.03	BB	D - 77971 Kippenheim					
stat.	change	date	name	Draw.-No.: MB - 919		Part.-No.:		Blatt	
				date		01.03.99		nam. Cihlar	

data sheet PLS 190
 standardflange

Blatt
 Bl.