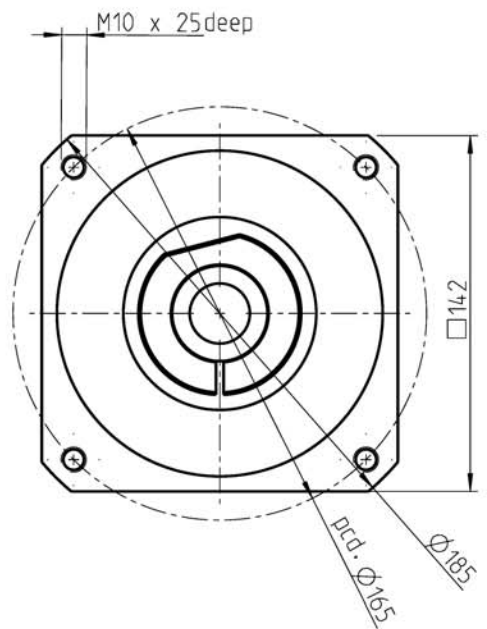
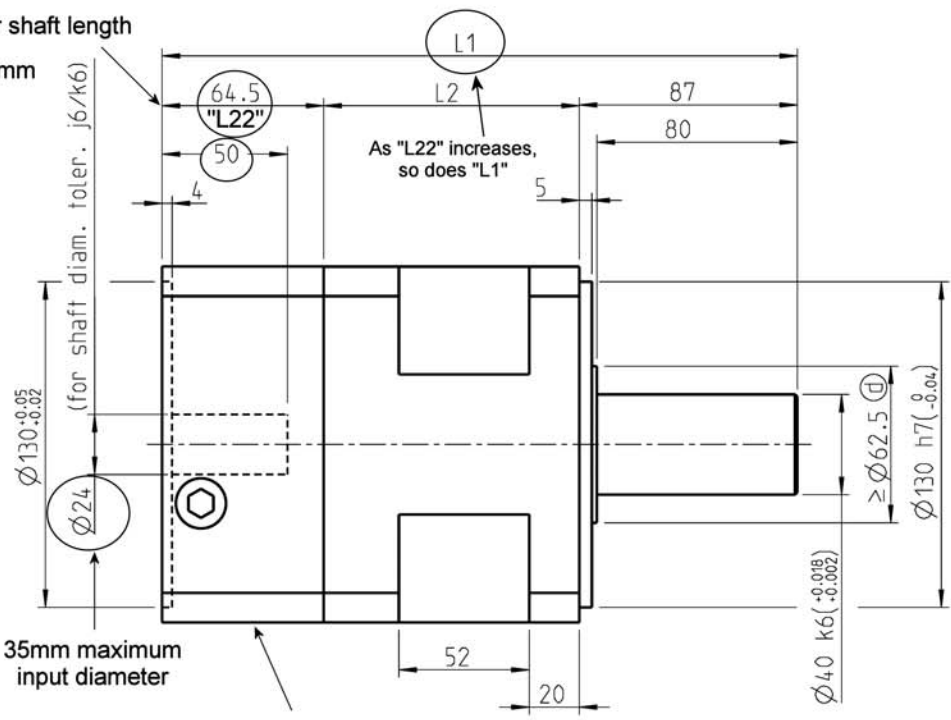
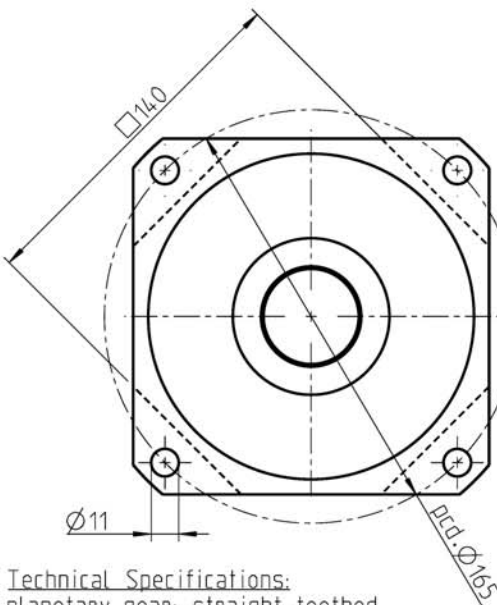


"L22" depends on motor shaft length

"L22" = motor shaft lgth. + 14.5mm  
(But not less than 64.5mm)



**Technical Specifications:**

- planetary gear: straight-toothed
- lifetime: 20.000h
- output shaft bearing: taper roller bearing
- max. axial load: 15000N by n2=100 1/min /Fr=0 /Lh=20.000h <sup>Ⓔ</sup>
- max. radial load: 9000N by n2=100 1/min /Fa=0 /Lh=20.000h <sup>Ⓒ</sup>
- max. axial load: 13300N by n2=100 1/min /Fr=0 /Lh=30.000h <sup>Ⓔ</sup>
- max. radial load: 8200N by n2=100 1/min /Fa=0 /Lh=30.000h
- ref. on shaft center / T=30 °C
- backlash: 1.stage<=3 arcmin / 2.stage<=5 arcmin
- ref. on output shaft
- max. input speed: n1=6500 1/min<sup>(\*)</sup> <sup>Ⓐ</sup>
- recommended input speed: n1<=3000 1/min<sup>(\*)</sup>
- lubrication: life lubrication
- operating temperature: -25 °C ... +100 °C
- efficiency: by rated load (ratio dependently) <sup>Ⓑ</sup>
- ca. 98% 1.stage, ca.95% 2.stage
- nominal output torque: by n2=100 1/min
- sealing:
- input: radial shaft seal ring
- output: radial shaft seal ring
- motor mounting: M2 (stocked driving pinion)
- torque of clamping screw: 40Nm
- method of working: S1
- operation ratio: cB=1
- protective system: IP 65
- max.motor weight static: 50 kg

35mm maximum input diameter

Input flange is motor dependent

**Material:**  
output shaft: GGG 60  
housing: GGG 60 - black  
input flange: Aluminium

	1.stage		2.stage	
L1	253,5		294,5	
L2	102		143	
	i	Mn	i	Mn
	3	400	12	910
	4	560	15	780
	5	700	16	910
	8	450	20	910
	10	305	25	780
			32	910
			40	780
			64	450
			100	305

Mn = nominal output torque at output shaft [Nm]  
<sup>Ⓓ</sup> emergency stop torque: 2 times

<sup>(\*)</sup> Operating temperature may not be exceeded!<sup>Ⓐ</sup>

modification reserve!

Consider motor fitting instructions!

		scale: 1:2		DIN A3	ISO
		data sheet PLS 142 standard flange			
h			date	name	
g			02.08.01	ille	
f	text added	19.09.05	Si/Ci	02.08.01	Bühler
e	value adjustment	19.09.05	Si/Ci	02.08.01	Cihlar
d	was ø65	30.08.05	IB/BB		
c	text added	29.04.05	Si/DH	Neugart GmbH	
b	text added	09.07.04	Ci	Kettenstrasse 16	
a	text added	11.12.03	BB	D - 77971 Kippenheim	
stat.	change	date	nam.	date	03.03.99
				name	Cihlar
				Blatt	
				Draw.-No.:	MB - 916
				Part.-No.:	
				Bl.	