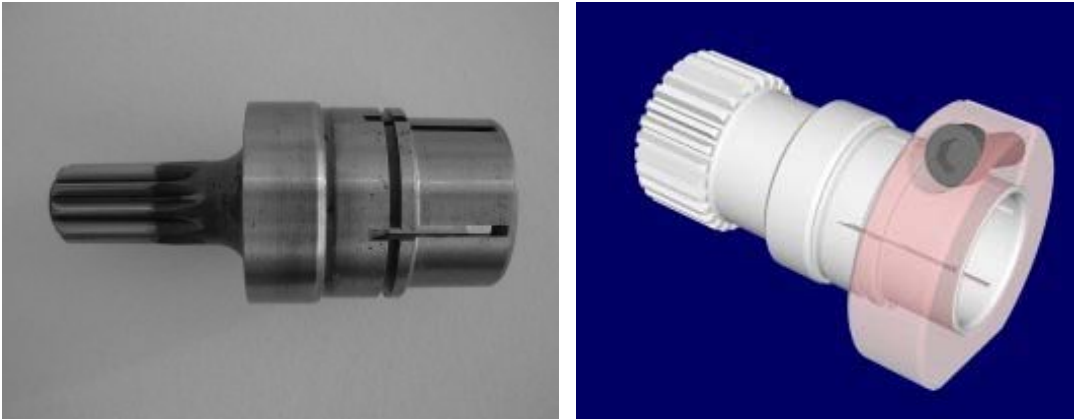


The multiple slots decrease the radial stiffness of the shank increasing the transferable torque at the same clamping bolt torque.



The position of the motor keyway in reference to the slots is irrelevant, the deformation of the shank remains even, due to the “closed ring”. The PCS clamping System is virtually “fool proof”

Enhanced (Patent Pending) Neugart Clamping System PCS

Soon available in all NEUGART servo Gearheads !

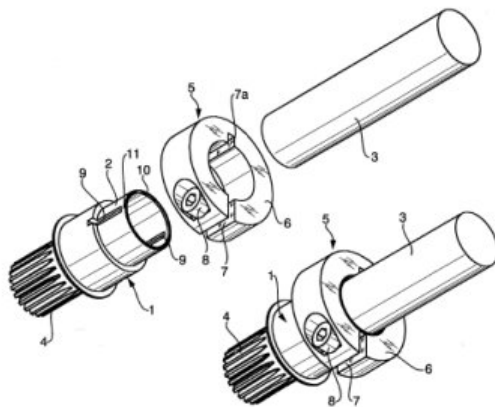
The connection of the motor shaft to the input gear of a servo gearhead has should satisfy the following main requirements.

- safely transfer the torque
- connect with a minimum of run out
- connect a variety of shaft diameters
- easy mounting

Today state of the art planetary servo gearhead designs use flexible clamping arrangement. To eliminate the common mounting mistakes, namely run-out due to uneven clamping, NEUGART introduced an enhanced Patent Pending Clamping system.

Conventional sun gears with slit hollow shank can easily cause an uneven clamping specially if during the mounting the keyed motor shaft is not aligned properly.

The new Patent Pending system:



Multiple slots are cut into the hollow shank of the sun gear, however not all the way through keeping a “closed ring” at the shank end.

The “closed ring” will force an even deformation during the clamping avoiding virtually any run-out.