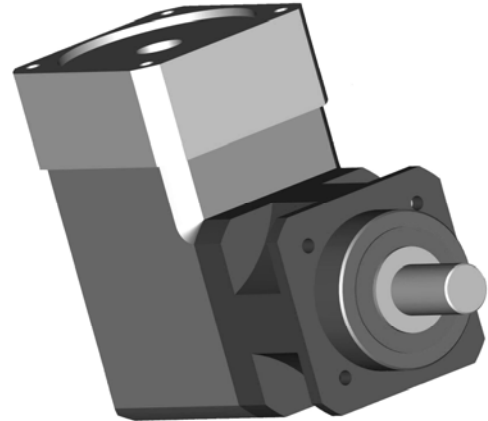




WPLS / WPLV

High Precision Bevel-Planetary Servo Gearhead

Main Configurations, Torque Rating



WPLS 70, 90, 115, 142, 190
 With the classic Neugart pilot arrangement, a square integrated output flange with through holes, and smooth shaft (key or spline optional), the WPLS can mount to any servo motor via PCS– the patented precision clamping system

WPLV 70, 90, 115, 142
 With a square integrated output flange with through holes, a industry standard long centering pilot, and a smooth shaft (key optional), the WPLV can mount to any servo motor via PCS– the patented precision clamping system

| Nominal-Rated Torque ⁽¹⁾ ◇ Torque permissible 30000 output shaft rotations ⁽²⁾ | | | | | Ratio | Stage ⁽³⁾ |
|------------------------------------------------------------------------------------------------------|---------------------------|------------------------------|-----------------------------|-----------------------------|-------|----------------------|
| <i>Nm (lbin)</i> | | | | | | |
| <i>WPLS 70 WPLV70</i> | <i>WPLS 90 WPLV90</i> | <i>WPLS 115 WPLV 115</i> | <i>WPLS 142 WPLV142</i> | <i>WPLS 190</i> | | |
| 40 (354) ◇ 64 (566) | 64 (566) ◇ 102 (903) | 165 (1460) ◇ 264 (2336) | 465 (4115) ◇ 744 (6584) | 1200 (10620) ◇ 1920 (16992) | 4 | 1 |
| 50 (443) ◇ 80 (708) | 80 (780) ◇ 128 (1133) | 210 (1859) ◇ 336 (2974) | 585 (5177) ◇ 936 (8284) | 1500 (13275) ◇ 2400 (21240) | 5 | 1 |
| 37(327) ◇ 59 (522) | 62 (549) ◇ 99 (876) | 148 (1310) ◇ 237 (2098) | 450 (3983) ◇ 720 (6372) | 1000 (8850) ◇ 1600 (14160) | 8 | 1 |
| 27 (239) ◇ 43 (381) | 45 (398) ◇ 72 (637) | 125 (1106) ◇ 200 (1770) | 305 (2699) ◇ 488 (4319) | 630 (5576) ◇ 1008 (8921) | 10 | 1 |
| 77 (681) ◇ 123 (1089) | 120 (1062) ◇ 192 (1699) | 260 (2301) ◇ 416 (3682) | 910 (8054) ◇ 1456 (12886) | 1800 (15930) ◇ 2880 (25488) | 16 | 2 |
| 77 (681) ◇ 123 (1089) | 110 (974) ◇ 176 (1558) | 260 (2301) ◇ 416 (3682) | 910 (8054) ◇ 1456 (12886) | 1800 (15930) ◇ 2880 (25488) | 20 | 2 |
| 68 (602) ◇ 109 (965) | 110 (974) ◇ 176 (1558) | 210 (1859) ◇ 336 (2974) | 780 (6903) ◇ 1248 (11045) | 1800 (15930) ◇ 2880 (25488) | 25 | 2 |
| 77 (681) ◇ 123 (1089) | 120 (1062) ◇ 192 (1699) | 260 (2301) ◇ 416 (3682) | 910 (8054) ◇ 1456 (12886) | 1800 (15930) ◇ 2880 (25488) | 32 | 2 |
| 68 (602) ◇ 109 (965) | 110 (974) ◇ 176 (1558) | 210 (1859) ◇ 336 (2974) | 780 (6903) ◇ 1248 (11045) | 800 (15930) ◇ 2880 (25488) | 40 | 2 |
| 37 (327) ◇ 59 (522) | 62 (549) ◇ 99 (876) | 148 (1310) ◇ 237 (2098) | 450 (3983) ◇ 720 (6372) | 1000 (8850) ◇ 1600 (14160) | 64 | 2 |
| 27 (239) ◇ 43 (381) | 45 (398) ◇ 72 (637) | 125 (1106) ◇ 200 (1770) | 305 (2699) ◇ 488 (4319) | 630 (5576) ◇ 1008 (8921) | 100 | 2 |

(1) Continuous duty rated torque, at uniform load, 30000 hrs L10 design life, at 100 rpm output shaft speed
 (2) Maximum torque allowable for 30000 output shaft rotations
 (3) Number of planetary reduction stages.