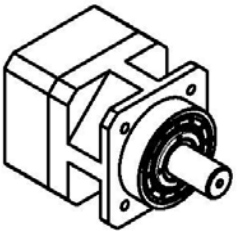
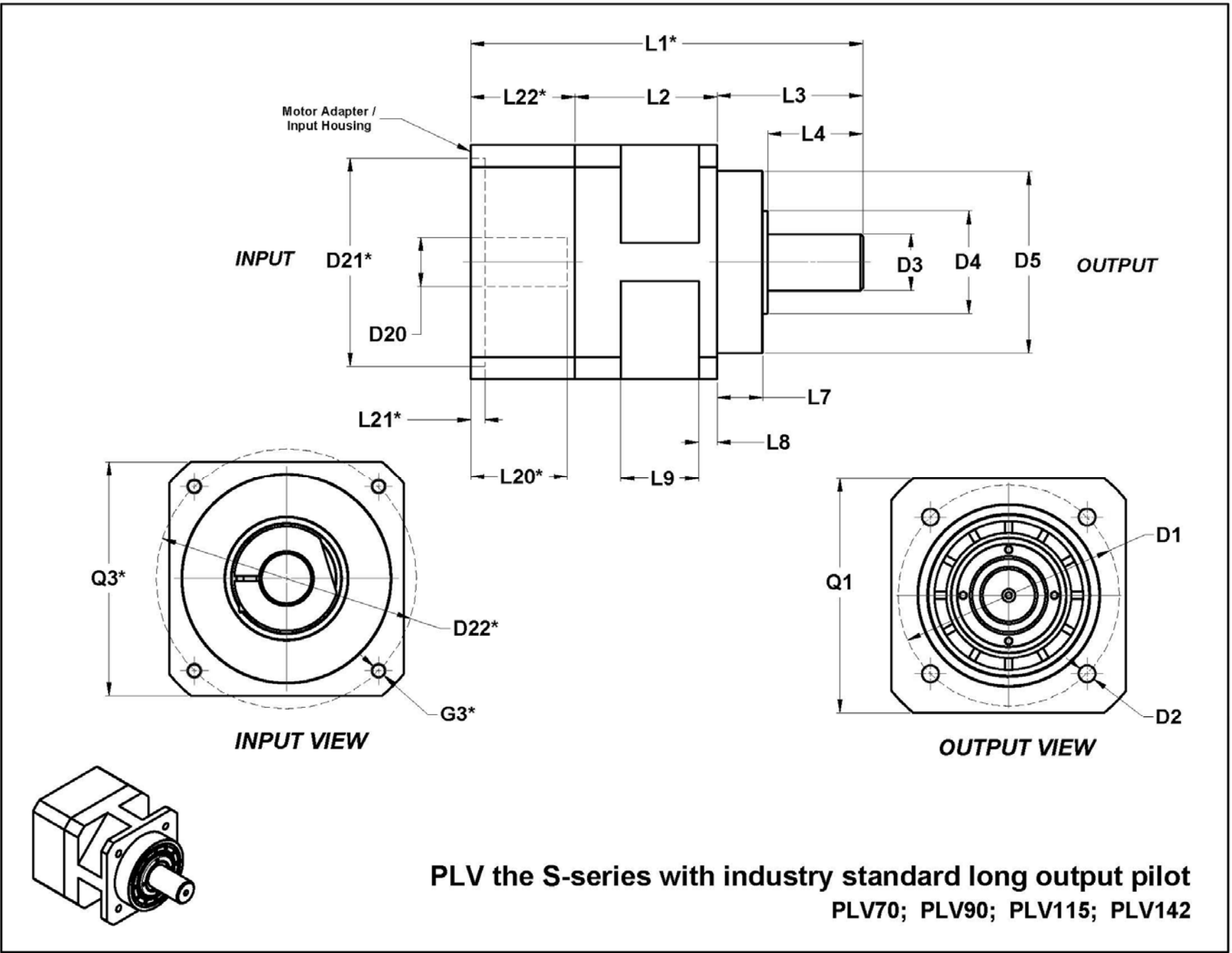
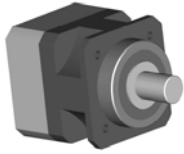


PLV
 High Precision Planetary Servo Gearhead
 With Long Piloted Output Flange



PLV the S-series with industry standard long output pilot
 PLV70; PLV90; PLV115; PLV142





PLV

High Precision Planetary Servo Gearhead

With Long Piloted Output Flange



DIMENSIONS	mm (in.)	Tol./#	PLV 70	PLV 90	PLV 115	PLV 142
D1 Output flange bolt circle			68 (2.677)	85 (3.346)	120 (4.724)	165 (6.496)
D2 Output flange bolt-hole diameter		4	5.5 (0.217)	6.5 (0.256)	8.5 (0.335)	11 (0.433)
D3 Output shaft diameter		h7	16 (0.629)	22 (0.866)	32 (1.259)	40 (1.575)
D4 Shaft collar diameter			32.5 (1.279)	37.5 (1.476)	42.5 (1.673)	62.5 (2.461)
D5 Output flange pilot diameter		h7	60 (2.362)	70 (2.756)	90 (3.543)	130 (5.118)
Q1 Housing square			70 (2.756)	90 (3.543)	115 (4.527)	142 (5.590)
Q2 Housing at the recess			58 (2.283)	74 (2.913)	105 (4.134)	140 (5.511)
L2 Main housing length	1-Stage		55.5 (2.185)	54.5 (2.146)	54 (2.126)	79 (3.110)
	2-Stage		79 (3.110)	83 (3.268)	87.5 (3.445)	120 (4.724)
L3 Shaft length (to mounting face)			48 (1.890)	56 (2.205)	88 (3.465)	110 (4.331)
L4 Shaft length (to collar)			28 (1.102)	36 (1.417)	58 (2.283)	80 (3.149)
L7 Pilot length			19 (0.748)	17.5 (0.688)	27.5 (1.083)	28 (1.102)
L8 Flange thickness			6 (0.236)	7 (0.276)	9 (0.354)	12 (0.472)
L9 Recess width			23 (0.905)	30 (1.181)	35 (1.378)	46 (1.811)
D20 Maximum input pinion bore ⁽¹⁾			14 (.551)	19 (0.748)	24 (0.944)	35 (1.377)
Available standard bushings ⁽¹⁾	mm		6; 6.35; 7; 8; 9; 9.525; 10; 11; 12; 12.7;	9.525; 10; 11; 12; 12.7; 14; 15.87; 16;	11; 12.7; 14; 15.875; 16; 19; 19.05; 22; 22.22;	19; 22; 24; 28; 28.575; 32;
	inch		.236; .250; .276; .315; .354; .375; .394; .433; .472; .500;	.375; .394; .433; .472; .500; .551; .625; .630;	.433; .500; .551; .625; .630; .748; .750; .866; .875;	.748; .866; .944; 1.102; 1.125; 1.378;
Motor dependent dimensions: D21*, D22*, L1*, L20*, L21*, L22*, G3*, Q3*	<p>Adapter / Input Housing dimensions and unit overall length depend on motor shaft geometry, motor flange style, and motor flange dimensions.</p> <p>A motor-specific adapter / input housing is supplied with every gearhead.</p>					
L22* - dimension calculation L22* Tolerance: mm (in) + 5 / - 0.0 (+ 0.196 / - 0.0)	<p>Determine L22* calc = motor shaft length + Δ L , if L22* calc ≤ L22* minimum → L22* = L22* minimum + Tolerance if L22* calc > L22* minimum → L22* = L22* calc + Tolerance</p>					
Δ L			6.5 (0.256)	10 (0.394)	6 (0.236)	14.5 (0.571)
L22* minimum			29.5 (1.161)	40 (1.575)	46 (1.811)	64.5 (2.540)