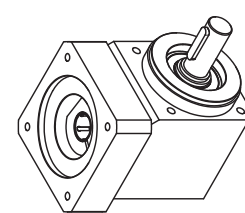
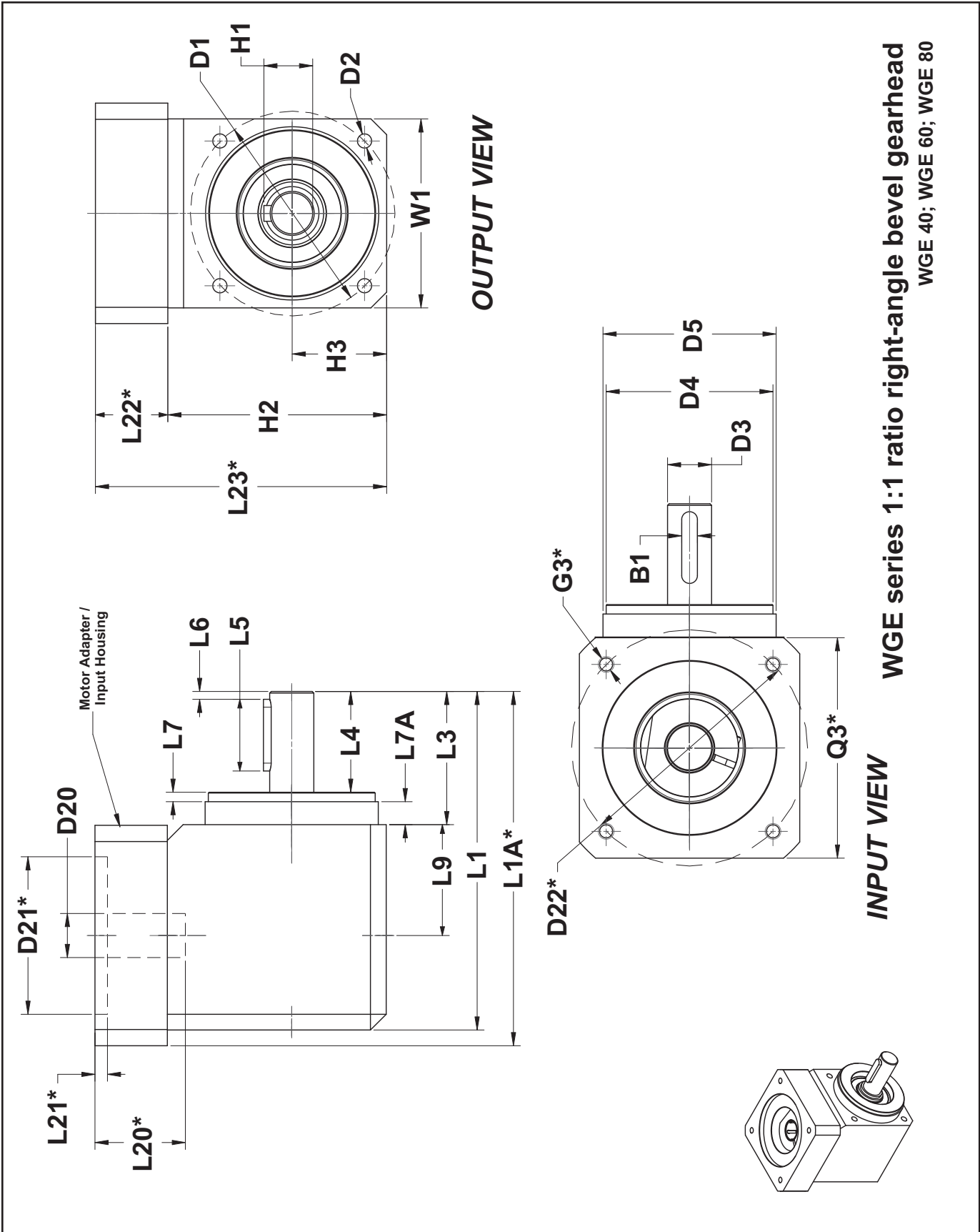
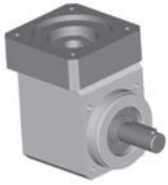


WGE

Right-Angle 1:1 Bevel Gearhead
Standard Configuration





WGE

Right-Angle 1:1 Bevel Gearhead Standard Configuration



Dimensions	mm (in)	Tol. / #	WGE 40	WGE 60	WGE 80
D1 Output bolt circle			44 (1.732)	65 (2.559)	90 (3.543)
D2 Output hole thread size - M x depth		4	M4 x 6	M5 x 8	M6 x 10
D3 Shaft diameter		h7	10 (0.393)	14 (0.551)	20 (0.787)
D4 Output pilot diameter (Minor)		h7	35.5 (1.397)	53 (2.086)	71 (2.795)
D5 Output pilot diameter (Major)		h7	37 (1.456)	55 (2.165)	73 (2.874)
L1 Overall length			76.6 (3.016)	107.5 (4.232)	133 (5.236)
L5 Key length			18 (0.708)	25 (0.984)	28 (1.102)
L6 Key location from shaft end			2.5 (0.098)	2.5 (0.098)	4 (0.157)
L3 Shaft length to pilot face			31.6 (1.244)	42.3 (1.665)	49 (1.929)
L4 Shaft length to output face			23.8 (0.937)	32 (1.260)	36.5 (1.437)
L7A Output pilot length (Major)			5.6 (0.220)	7.3 (0.287)	9 (0.354)
L7 Output pilot length (Minor)			2.2 (0.086)	3 (0.118)	3.5 (0.1377)
L9 Width from center line to front face			25 (0.984)	35 (1.377)	44 (1.732)
H1 Shaft + key height			11.2 (0.44)	16 (0.629)	22.5 (0.885)
H2 Right-angle housing height			49 (1.929)	69.5 (2.736)	88.3 (3.476)
H3 Height - Output center line			20 (0.787)	30 (1.181)	40 (1.575)
W1 Housing width			40 (1.575)	60 (2.362)	80 (3.150)
B1 Key width			3 (0.118)	5 (0.197)	6 (0.236)
D20 Maximum input bore (motor shaft) diameter			8 (0.315)	14 (0.551)	19 (0.748)
Available standard bushings ⁽¹⁾ ⁽¹⁾ For motor shaft smaller than D20 , a precision standard bushing is supplied.	mm		4; 5; 6; 6.35	6; 6.35; 7; 8; 9; 9.525; 10; 11; 12; 12.7	9.525; 10; 11; 12; 12.7; 14; 15.875; 16;
	Inch		.157; .196; .236; .250	.236; .250; .276; .315; .354; .375; .394; .433; .472; .500;	.375; .394; .433; .472; .500; .551; .625; .630;
Motor-dependent dimensions: D21*, D22*, L1A*, L20*, L21*, L22*, L23*, G3*, Q3*			Adapter / Input housing dimensions and unit overall length depend on motor output geometry. A motor-specific adapter / Input housing is supplied with every gearhead.		
L22* - dimension calculation L22* Tolerance: +5 / - 0.0 (+ 0.196 / - 0.0)			Determine L22* calc = motor shaft length + Δ L , if L22* calc ≤ L22* minimum → L22* = L22* minimum + Tolerance if L22* calc > L22* minimum → L22* = L22* calc + Tolerance		
Δ L			6 (0.236)	7 (0.276)	8.8 (0.346)
L22* minimum			19 (0.748)	16 (0.63)	21.2 (0.835)