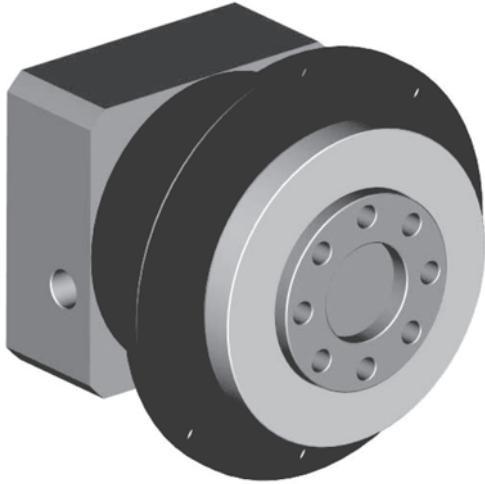


PLFE

In-Line Planetary Servo Gearhead
With EN ISO 9409 Rotating Output Flange



PLFE 64, 90,110

**Compact, planetary servo gearhead with rotating disc output according to the EN ISO 9409
“Standard for Mechanical Interfaces for Manipulating Industrial Robots in Automation”**

Compact, high stiffness, high torque density solution for automation tasks. Flexible motor mounting via PCS clamping arrangement.

Nominal-Rated Torque ⁽¹⁾ ◇ Torque permissible 30000 output shaft rotations ⁽²⁾			Ratio	Stages ⁽³⁾
PLFE 64	PLFE 90	PLFE 110		
28 (245) ◇ 45 (398)	85(752) ◇ 136 (1203)	115 (1018) ◇ 184 (1628)	3	1
38 (336) ◇ 61 (540)	115 (1018) ◇ 184 (1628)	155 (1372) ◇ 248 (2531)	4	1
40 (354) ◇ 64 (566)	110 (973) ◇ 176 (1558)	195 (1726) ◇ 312 (2761)	5	1
18 (160) ◇ 29 (256)	50 (442) ◇ 80 (708)	120 (1062) ◇ 192 (1699)	8	1
44 (389) ◇ 70 (619)	130 (1150) ◇ 208 (1840)	240 (2124) ◇ 384 (3398)	9	2
44 (389) ◇ 70 (619)	120 (1062) ◇ 192 (1699)	260 (2301) ◇ 416 (3681)	12	2
44 (389) ◇ 70 (619)	110 (973) ◇ 176 (1558)	230 (2035) ◇ 368 (3257)	15	2
44 (389) ◇ 70 (619)	120 (1062) ◇ 192 (1699)	260 (2301) ◇ 416 (3681)	16	2
44 (389) ◇ 70 (619)	120 (1062) ◇ 192 (1699)	260 (2301) ◇ 416 (3681)	20	2
40 (354) ◇ 64 (566)	110 (973) ◇ 176 (1558)	230 (2035) ◇ 368 (3257)	25	2
44 (389) ◇ 70 (619)	120 (1062) ◇ 192 (1699)	260 (2301) ◇ 416 (3681)	32	2
40 (354) ◇ 64 (566)	110 (973) ◇ 176 (1558)	230 (2035) ◇ 368 (3257)	40	2
18 (159) ◇ 29 (256)	50 (442) ◇ 80 (708)	120 (1062) ◇ 192 (1699)	64	2

(1) Continuous duty-rated torque, at uniform load, 30000 hrs L10 design life, at 100 rpm output shaft speed
 (2) Maximum torque allowable for 30000 output shaft rotations
 (3) Number of planetary reduction stages

Emergency Stop / Short-Term Peak Torque

200% of the continuous duty-rated torque. The gearbox will withstand this torque only for a few thousand load cycles.
-Torques at this magnitude should not be part of the normal operating cycle!