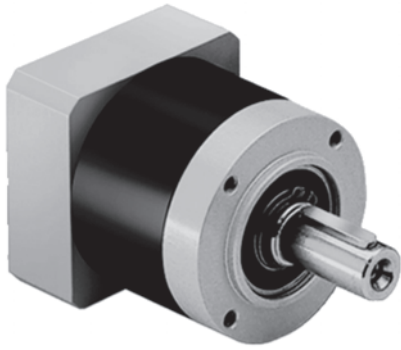
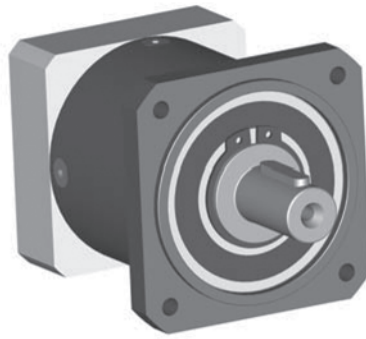


PLE

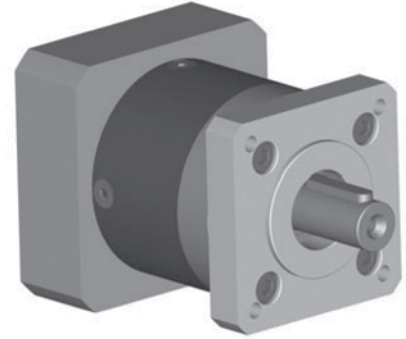
In-Line Planetary Servo Gearhead
Main Configurations, Torque Rating



PLE 40, 60, 80, 120, 160
round output flange with drilled and tapped holes (B14 C-face); keyed output shaft; motor mount via PCS clamping arrangement



PLE 60/70, 80/90, 120/115
Integrated “B5” square output flange; keyed output shaft; motor mount via PCS clamping arrangement



PLE 40, 60, 80, 120,
with bolt-on NEMA output flange; keyed output shaft; motor mount via PCS clamping arrangement

Nominal-Rated Torque ⁽¹⁾ ◇ Torque permissible 30000 output shaft rotations ⁽²⁾					Nm (lbin)	Ratio	⁽³⁾ Stages
PLE 40	PLE 60 PLE60/70	PLE 80 PLE 80/90	PLE 120 PLE 120/115	PLE 160			
11 (97) ◇ 17.6 (155)	28 (245) ◇ 45 (398)	85(752) ◇ 136 (1203)	115 (1018) ◇ 184 (1628)	400 (3540) ◇ 640 (5664)		3	1
15 (133) ◇ 24 (212)	38 (336) ◇ 61 (540)	115 (1018) ◇ 184 (1628)	155 (1372) ◇ 248 (2531)	450 (3982) ◇ 720 (6372)		4	1
14 (124) ◇ 22 (194)	40 (354) ◇ 64 (566)	110 (973) ◇ 176 (1558)	195 (1726) ◇ 312 (2761)	450 (3982) ◇ 720 (6372)		5	1
6 (53) ◇ 10 (88)	18 (160) ◇ 29 (256)	50 (442) ◇ 80 (708)	120 (1062) ◇ 192 (1699)	450 (3982) ◇ 720 (6372)		8	1
16.5 (146) ◇ 26 (230)	44 (389) ◇ 70 (619)	130 (1150) ◇ 208 (1840)	210 (1858) ◇ 336 (2973)	—		9	2
20 (177) ◇ 32 (283)	44 (389) ◇ 70 (619)	120 (1062) ◇ 192 (1699)	260 (2301) ◇ 416 (3681)	800 (7080) ◇ 1280 (11328)		12	2
18 (159) ◇ 29 (256)	44 (389) ◇ 70 (619)	110 (973) ◇ 176 (1558)	230 (2035) ◇ 368 (3257)	700 (6195) ◇ 1120 (9912)		15	2
20 (177) ◇ 32 (283)	44 (389) ◇ 70 (619)	120 (1062) ◇ 192 (1699)	260 (2301) ◇ 416 (3681)	800 (7080) ◇ 1280 (11328)		16	2
20 (177) ◇ 32 (283)	44 (389) ◇ 70 (619)	120 (1062) ◇ 192 (1699)	260 (2301) ◇ 416 (3681)	800 (7080) ◇ 1280 (11328)		20	2
18 (159) ◇ 29 (256)	40 (354) ◇ 64 (566)	110 (973) ◇ 176 (1558)	230 (2035) ◇ 368 (3257)	700 (6195) ◇ 1120 (9912)		25	2
20 (177) ◇ 32 (283)	44 (389) ◇ 70 (619)	120 (1062) ◇ 192 (1699)	260 (2301) ◇ 416 (3681)	800 (7080) ◇ 1280 (11328)		32	2
18 (159) ◇ 29 (256)	40 (354) ◇ 64 (566)	110 (973) ◇ 176 (1558)	230 (2035) ◇ 368 (3257)	700 (6195) ◇ 1120 (9912)		40	2
7.5 (66) ◇ 12 (106)	18 (159) ◇ 29 (256)	50 (442) ◇ 80 (708)	120 (1062) ◇ 192 (1699)	450 (3982) ◇ 720 (6372)		64	2
20 (177) ◇ 32 (283)	44 (389) ◇ 70 (619)	110 (973) ◇ 176 (1558)	260 (2301) ◇ 416 (3681)	—		60	3
20 (177) ◇ 32 (283)	44 (389) ◇ 70 (619)	120 (1062) ◇ 192 (1699)	260 (2301) ◇ 416 (3681)	—		80	3
20 (177) ◇ 32 (283)	44 (389) ◇ 70 (619)	120 (1062) ◇ 192 (1699)	260 (2301) ◇ 416 (3681)	—		100	3
18 (159) ◇ 29 (256)	44 (389) ◇ 70 (619)	110 (973) ◇ 176 (1558)	230 (2035) ◇ 368 (3257)	—		120	3
20 (177) ◇ 32 (283)	44 (389) ◇ 70 (619)	120 (1062) ◇ 192 (1699)	260 (2301) ◇ 416 (3681)	—		160	3
18 (159) ◇ 29 (256)	40 (354) ◇ 64 (566)	110 (973) ◇ 176 (1558)	230 (2035) ◇ 368 (3257)	—		200	3
20 (177) ◇ 32 (283)	44 (389) ◇ 70 (619)	120 (1062) ◇ 192 (1699)	260 (2301) ◇ 416 (3681)	—		256	3
18 (159) ◇ 29 (256)	40 (354) ◇ 64 (566)	110 (973) ◇ 176 (1558)	230 (1035) ◇ 368 (3257)	—		320	3
7.5 (66) ◇ 12 (106)	18 (159) ◇ 29 (256)	50 (442) ◇ 80 (708)	120 (1062) ◇ 192 (1699)	—		512	3

(1) Continuous duty-rated torque, at uniform load, 30000 hrs L10 design life, at 100 rpm output shaft speed

(2) Maximum torque allowable for 30000 output shaft rotations

(3) Number of planetary reduction stages.